

## HAR-508 Regulator

**IMPORTANT:** Read and follow all **Instructions** and **Safety Precautions** before installing, operating or maintaining this equipment. Keep this manual for future reference.



### WARNING

**Risk of explosion or fire.  
 Improper use can cause personal injury**

- This product is designed and intended for use in industrial compressed air systems only. Do not use for liquids or gasses other than air.

- Do not use where pressure or temperature can exceed rated operating conditions (see specifications).

- Regulated outlet pressure must never be set higher than the maximum operating pressure of the downstream air tool or equipment. An outlet pressure gauge should always be used.

### CAUTION

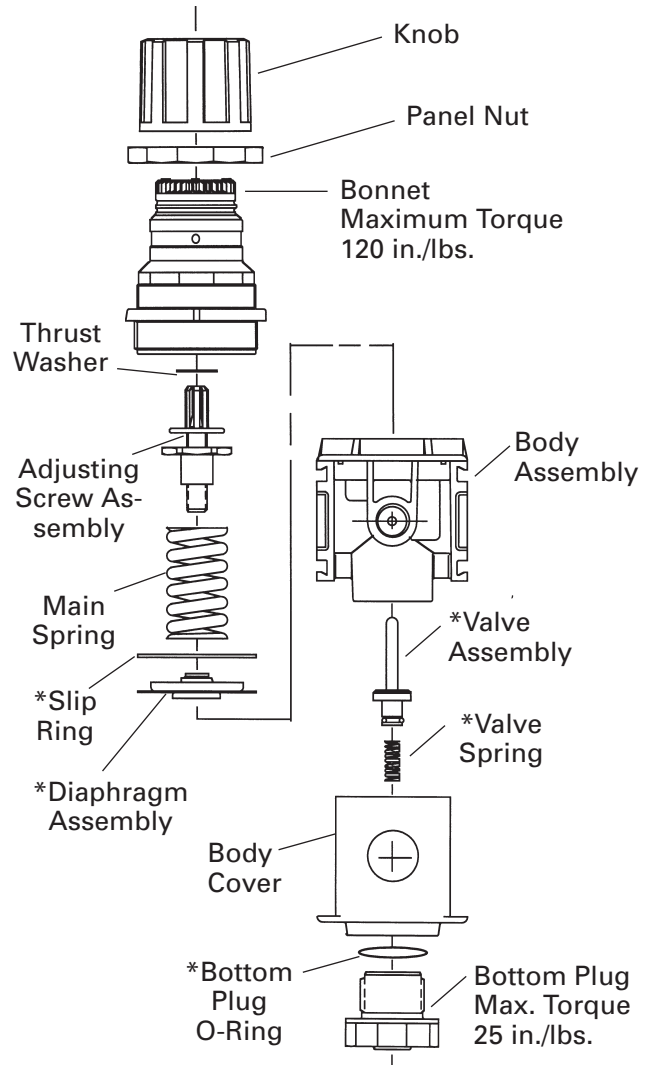
Certain compressor oils, cleaning agents and solvents may attack the plastic and rubber components used in the construction of this product. This product should not be used in conjunction with or in the vicinity of these materials. Read and follow material labels carefully. Please consult DeVilbiss if in doubt.

### SPECIFICATIONS

Type	Diaphragm, Relieving
Inlet Size	1/2" NPT(F)
Outlet Size (unregulated)	1/2" NPT(F)
Regulated Ports (2)	1/4" NPT(F)
Maximum Inlet Pressure	300 PSIG
Maximum Temperature	175° F (79.4° C)

### Flow Specifications Regulated Output

10 CFM @ 45 PSI with 100 PSI inlet
28 CFM @ 60 PSI with 100 PSI inlet



\* KK-5045 Diaphragm Repair Kit

### DESCRIPTION

This unit is designed to regulate and maintain a nearly constant outlet pressure through the front and rear 1/4" NPT ports while passing unregulated air through the 1/2" NPT ports. The front 1/4" port should be fitted with a gauge (such as a DeVilbiss GA-316, sold separately) to verify pressure at the rear 1/4" port.